

Ancaster Fairgrounds

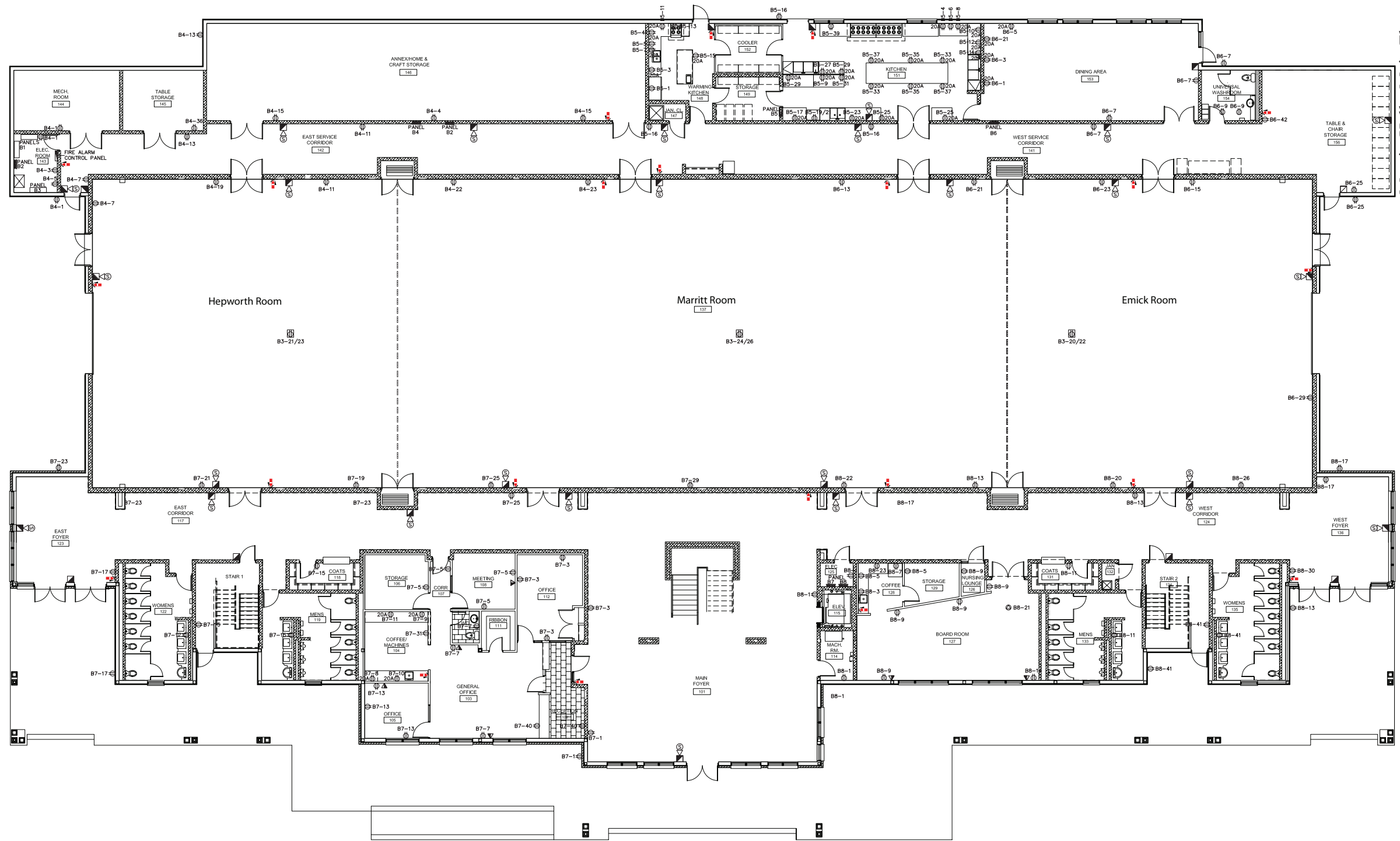
Building Layouts

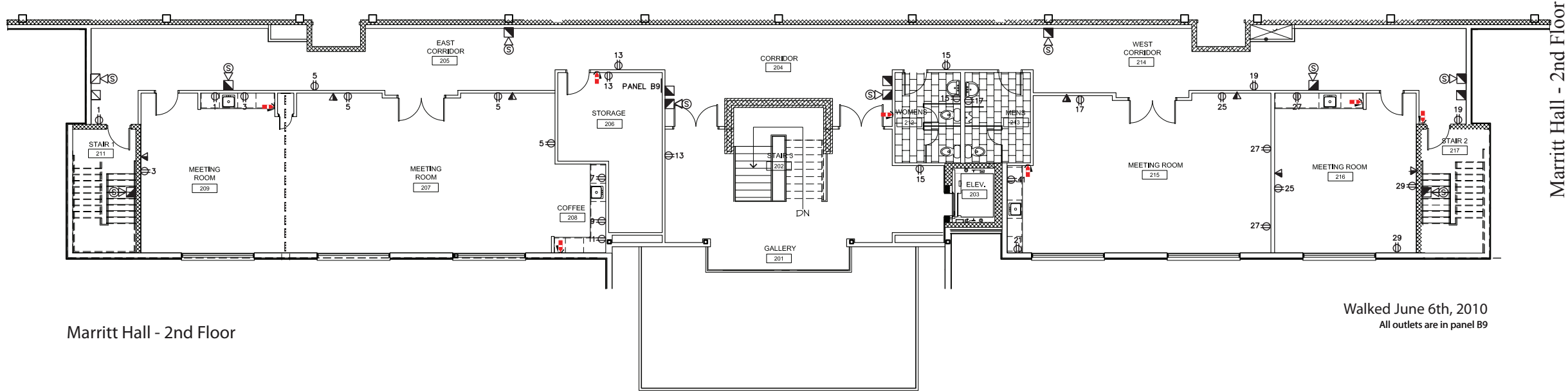
June 2010

Table of Contents

Legend.....	1
Marritt Hall - Main Floor	2
Marritt Hall - 2nd Floor	3
Concession Building	4
Old MacDonald's Farm	5
Education Building	6
Hossack Building (poultry)	7
Donovan Building (S,G, & L)	8
School Fair Building	9
Show Arena	10
Garage/Pumphouse	11
Gate House and Infield Building	12
Transformers Line Diagram	13
Grounds Map	14

LEGEND		
SYMBOL	DESCRIPTION	MTG HT Ⓢ
	Fire Extinguisher	
W	Water Source	AS NOTED
	INCANDESCENT/HID/COMPACT FLUORESCENT FIXTURE	AS NOTED
	DIRECTIONAL INCANDESCENT/HID/COMPACT FLUORESCENT AIMED FIXTURE	AS NOTED
	WALL MOUNTED	AS NOTED
	POLE MOUNTED	AS NOTED
	SWITCH	
	15AMP UNLESS OTHERWISE NOTED 125VOLT U-GROUND DUPLEX RECEPTACLE	457 (18")
	1Ø, 208V RECEPTACLE, AMPERAGE AS NOTED	457 (18")
	15AMP, 125V U-GROUND SPLIT RECEPTACLE	457 (18")
	EXIT SIGN	CEILING
	ELECTRICAL PANEL	1981 (78") TO TOP
	SYSTEM PANEL AS NOTED	1981 (78") TO TOP
	DISCONNECT SWITCH	1270 (50")
	VOICE (TELEPHONE) OUTLET	457 (18")
	VOICE/DATA OUTLET	457 (18")
	DATA SYSTEM OUTLET	457 (18")
	SINGLE OR DOUBLE REMOTE EMERGENCY HEADS RESPECTIVELY	WALL MOUNTED
C1,C2	EXTERIOR LIGHTING CONTACTORS	AS NOTED

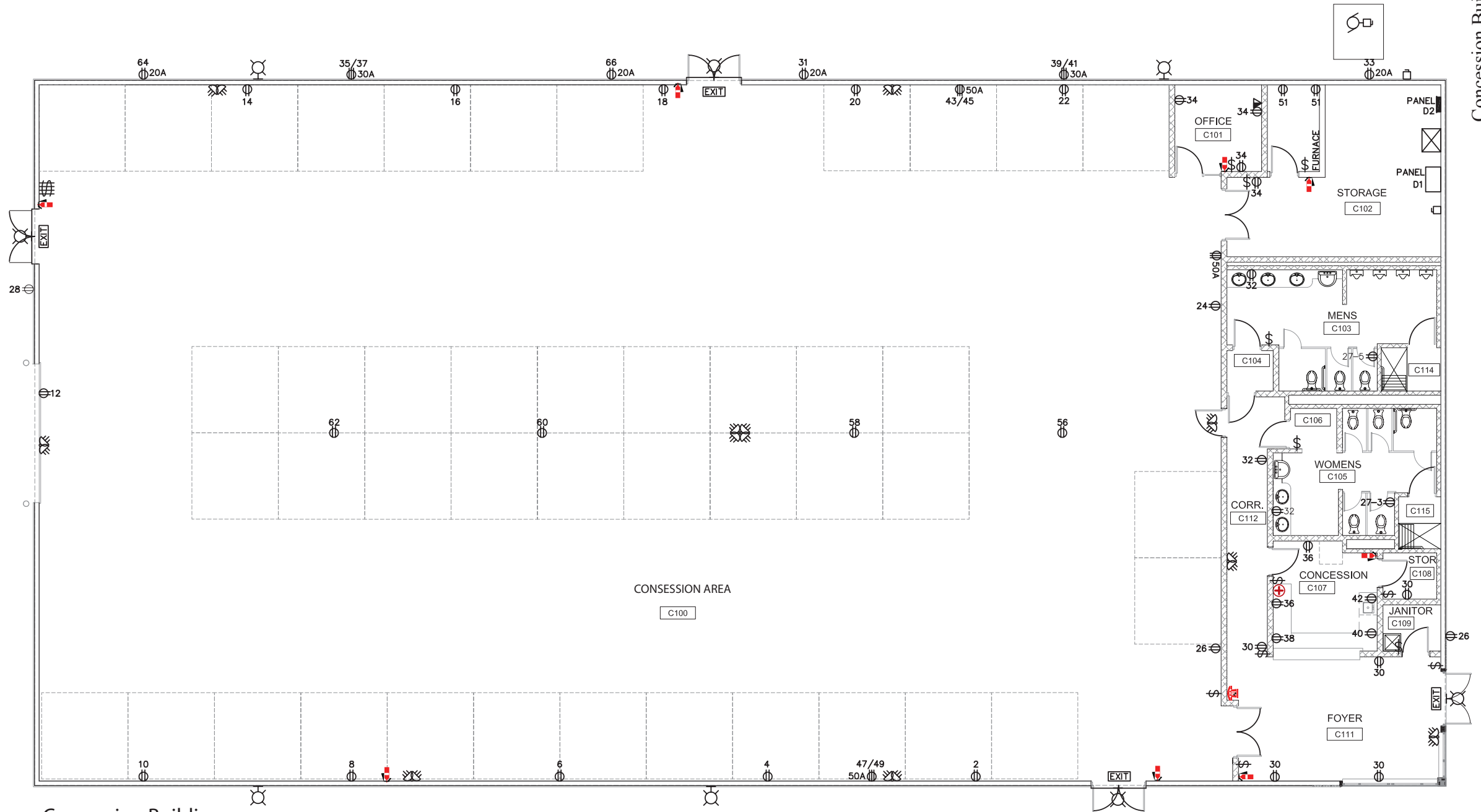




Marritt Hall - 2nd Floor

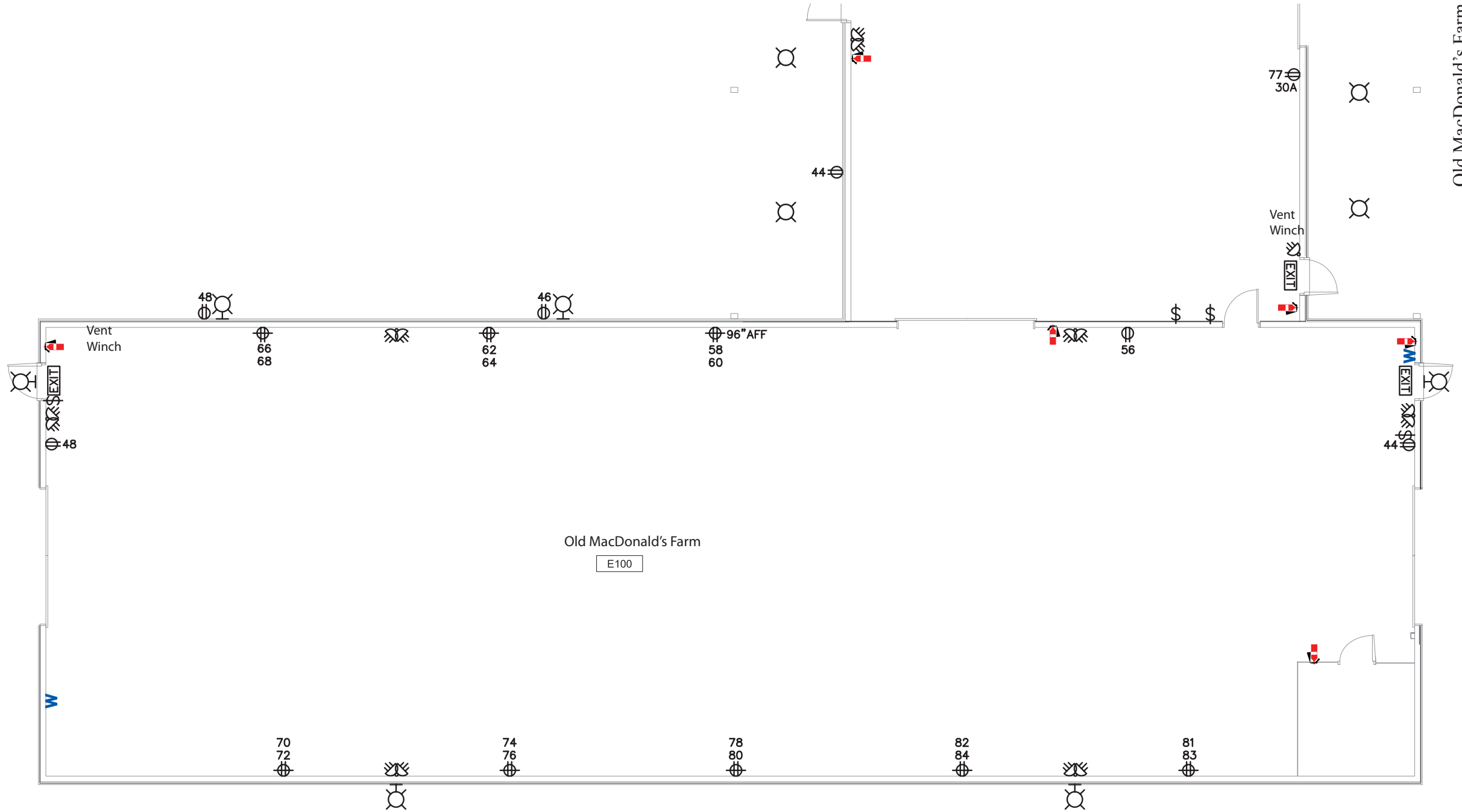
Walked June 6th, 2010
All outlets are in panel B9

Marritt Hall - 2nd Floor



Consession Building

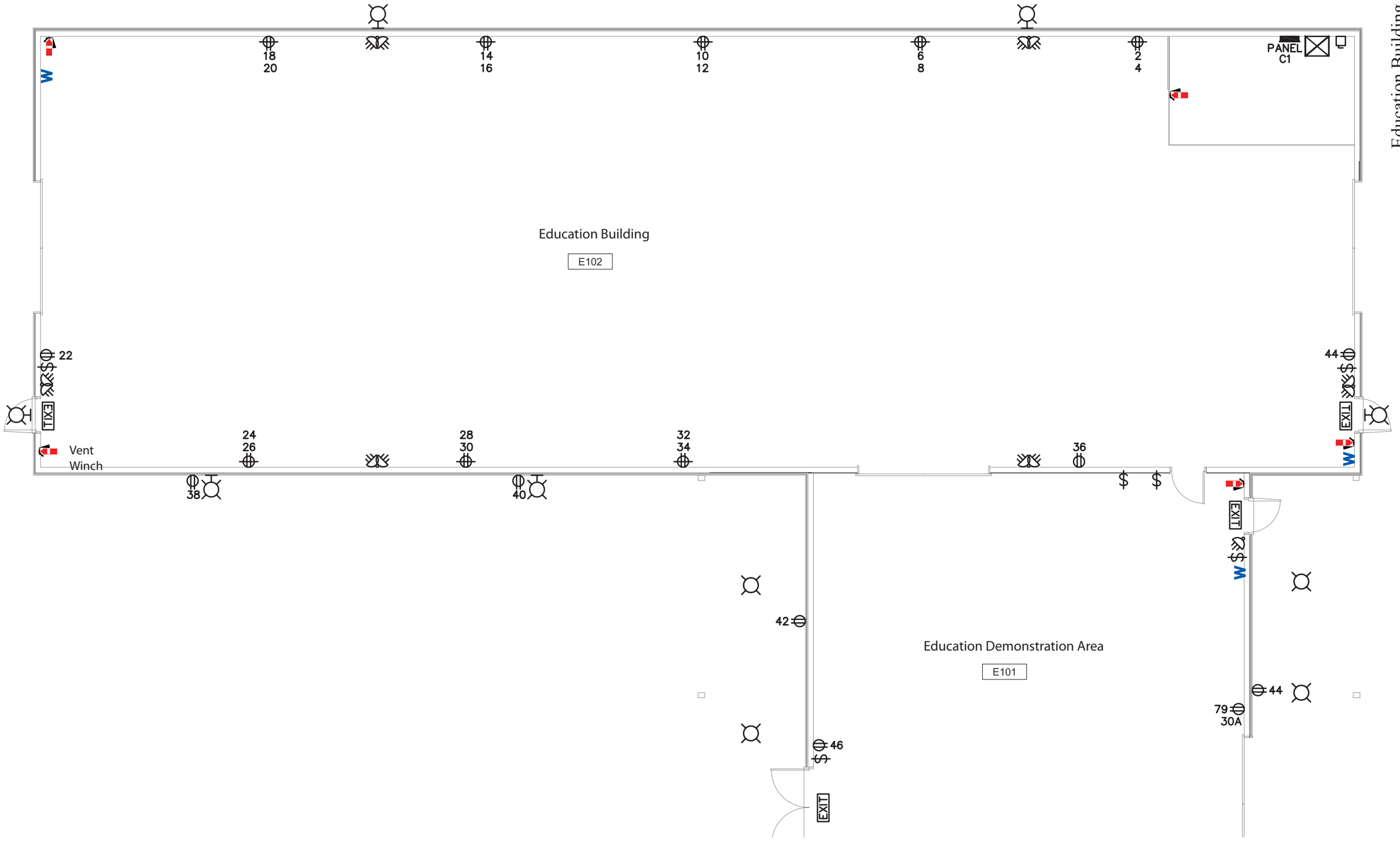
Walked June 6th, 2010
All outlets are in panel D2

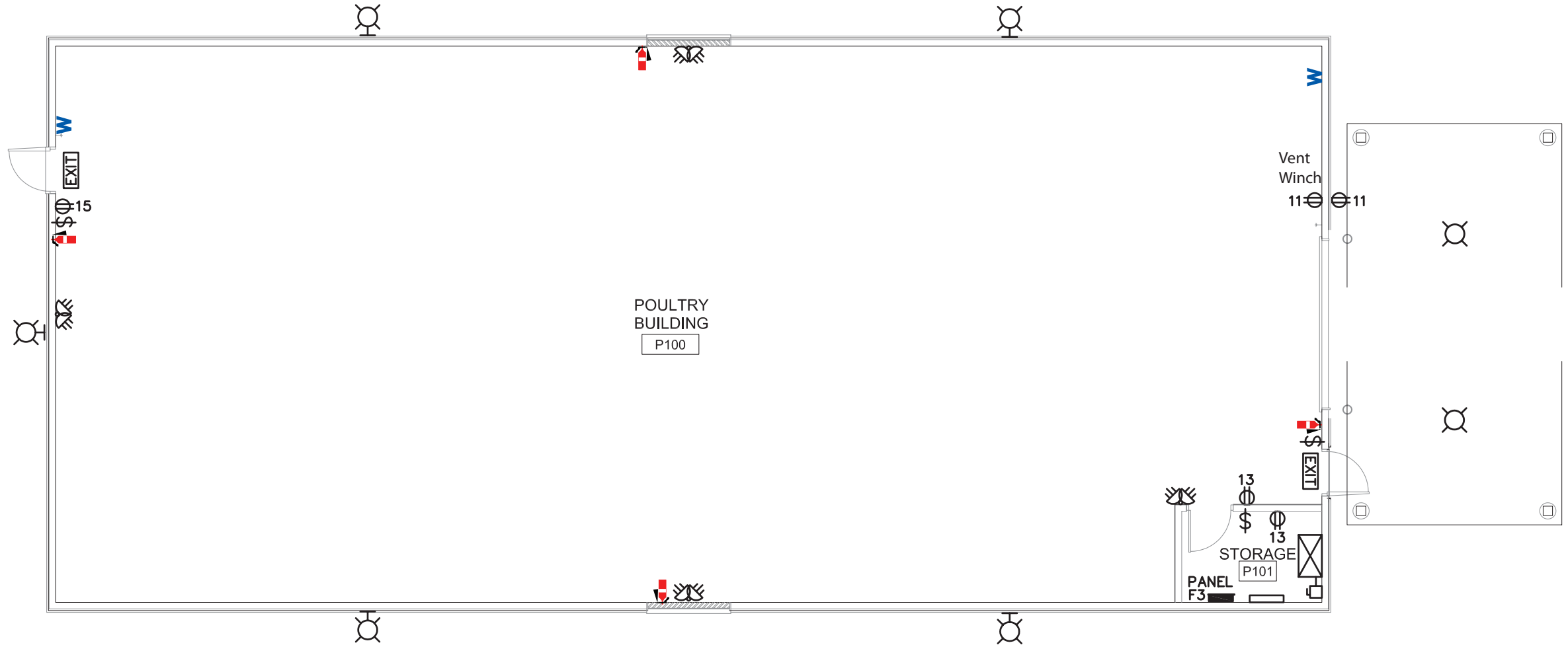


Old MacDonald's Farm and Education Complex

Walked June 6th, 2010

All outlets are in panel C1

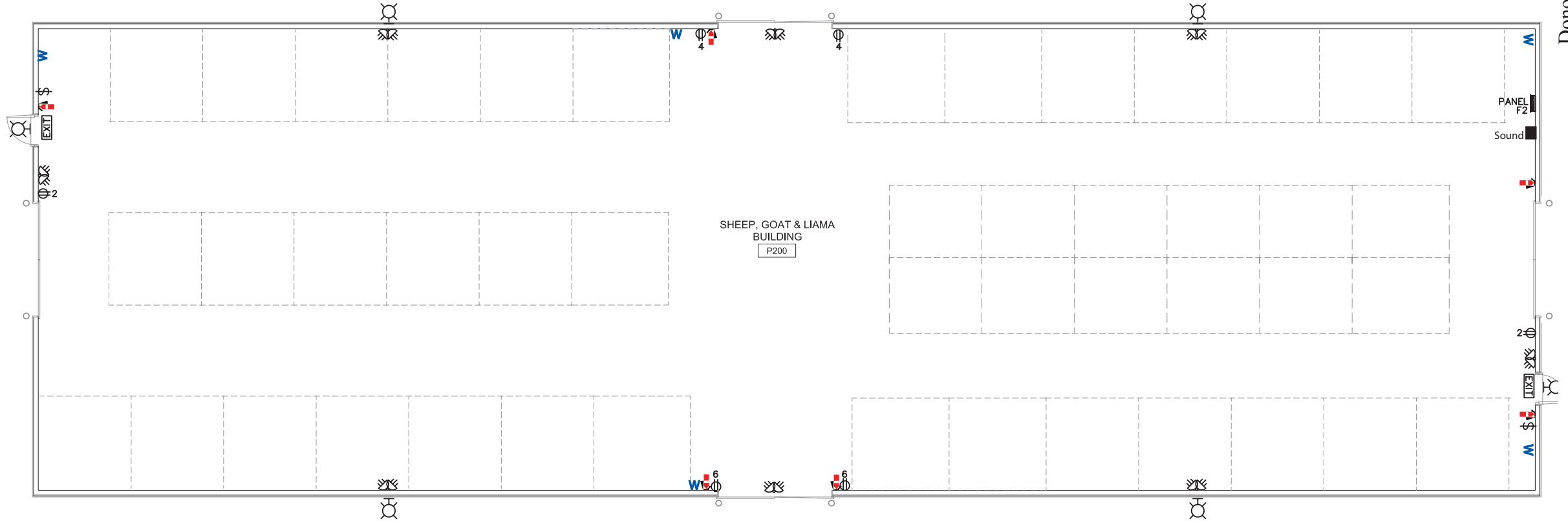




Hossack Building (Poultry)

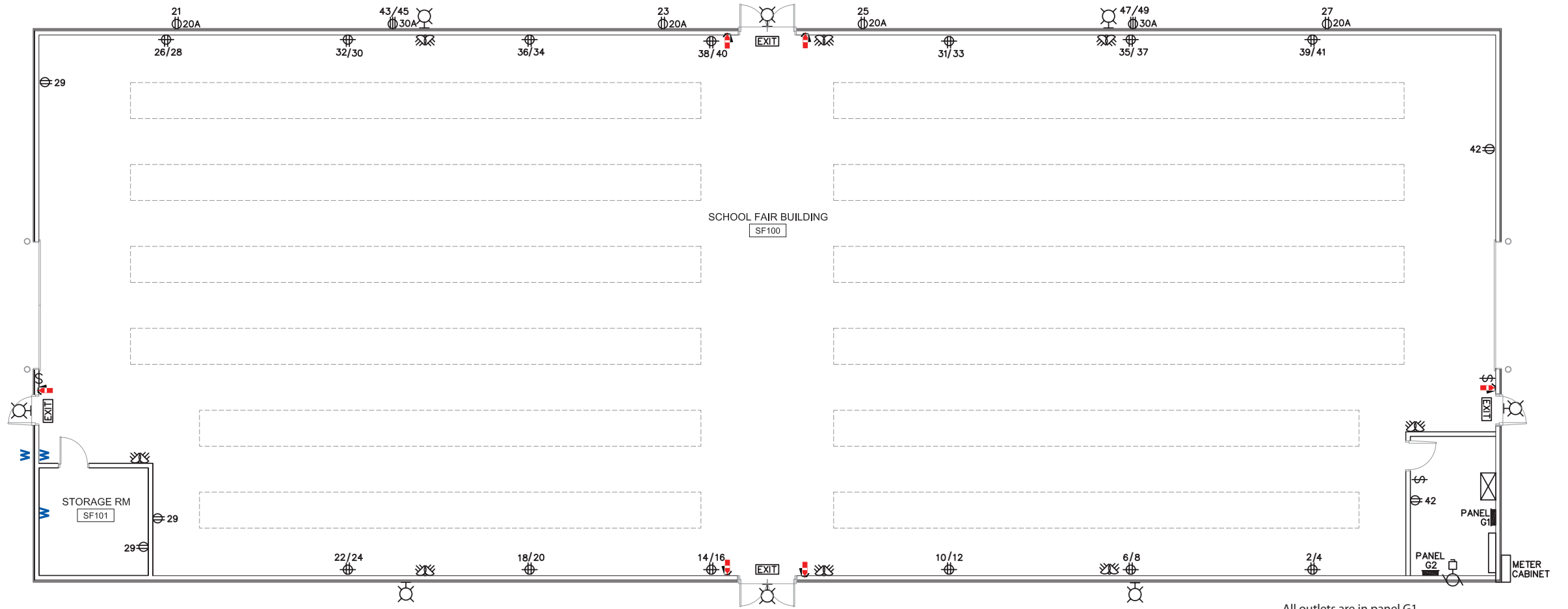
Walked June 6th, 2010

All outlets are in panel F3



Donovan Building (Sheep, Goat & Lama)

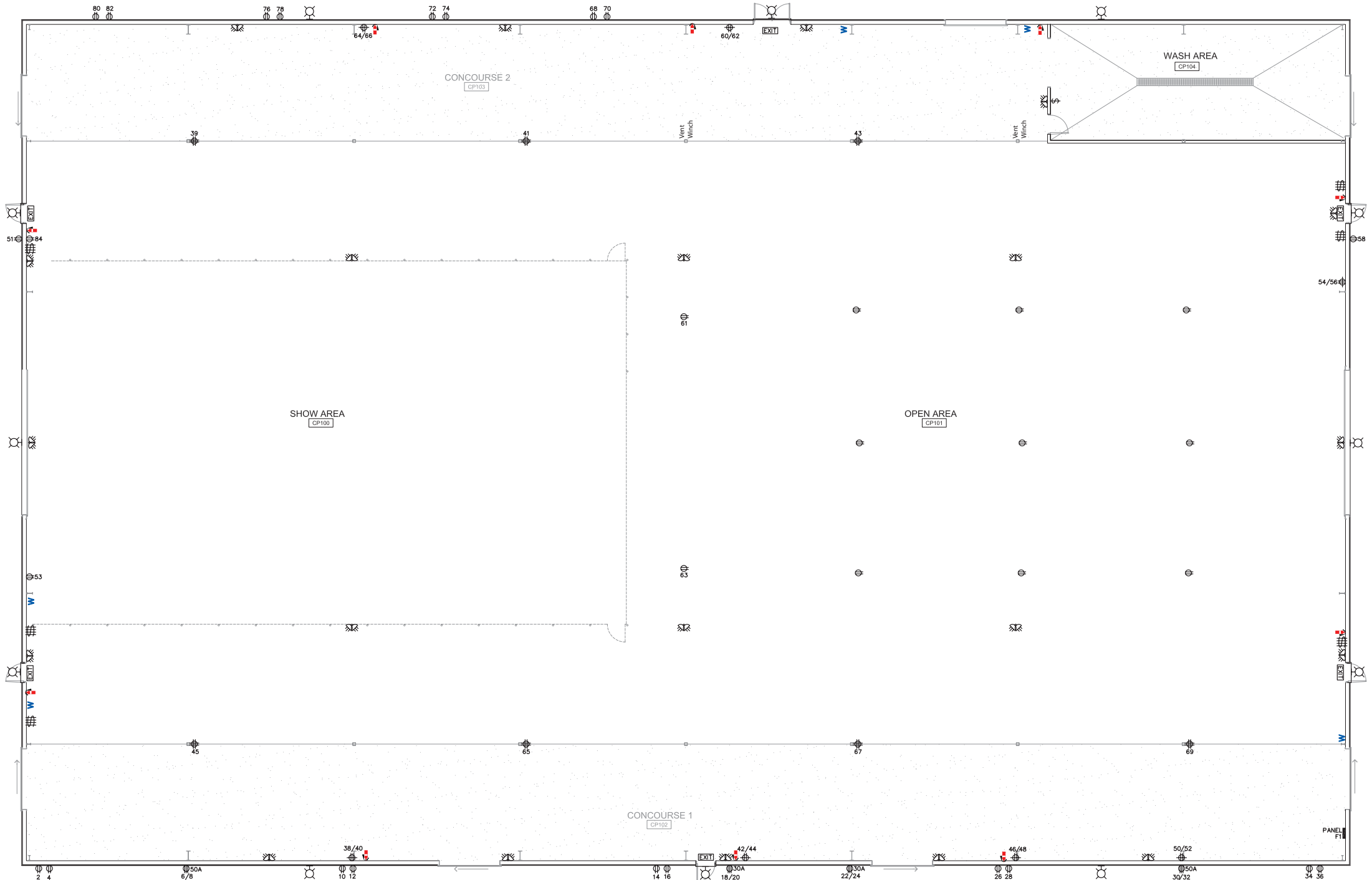
Walked June 6th, 2010
All outlets are in panel F3



School Fair Building

All outlets are in panel G1
Walked June 6th, 2010

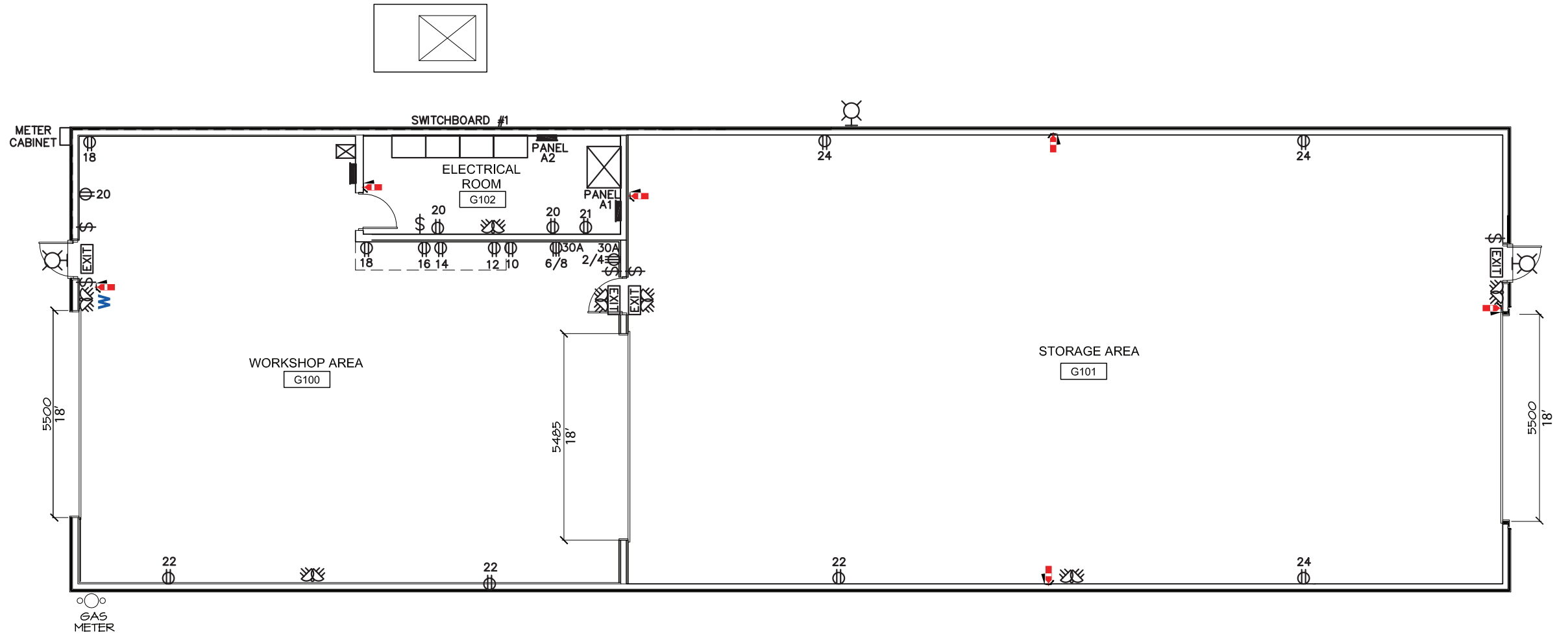


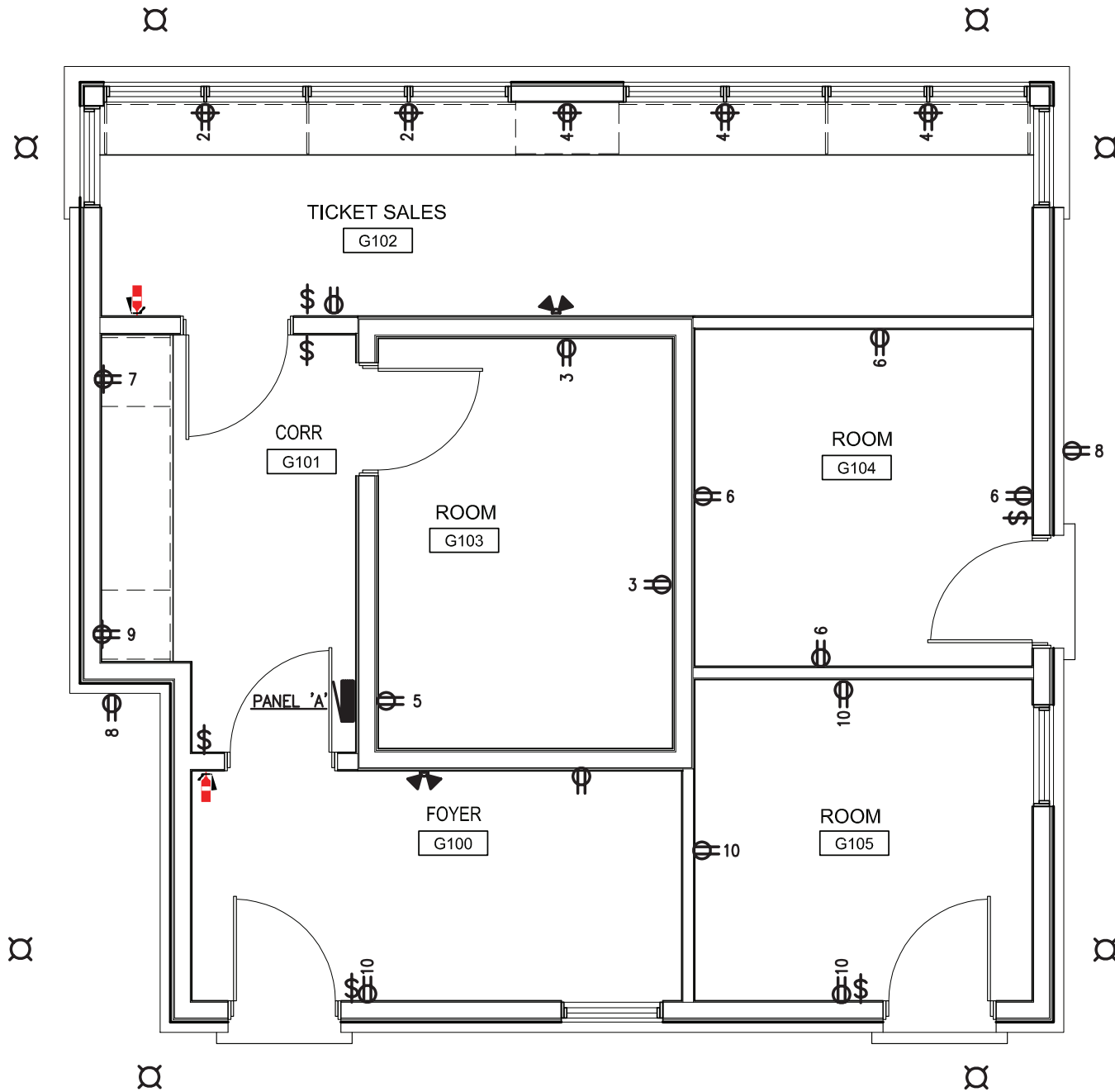


Show Arena

Walked June 6th, 2010

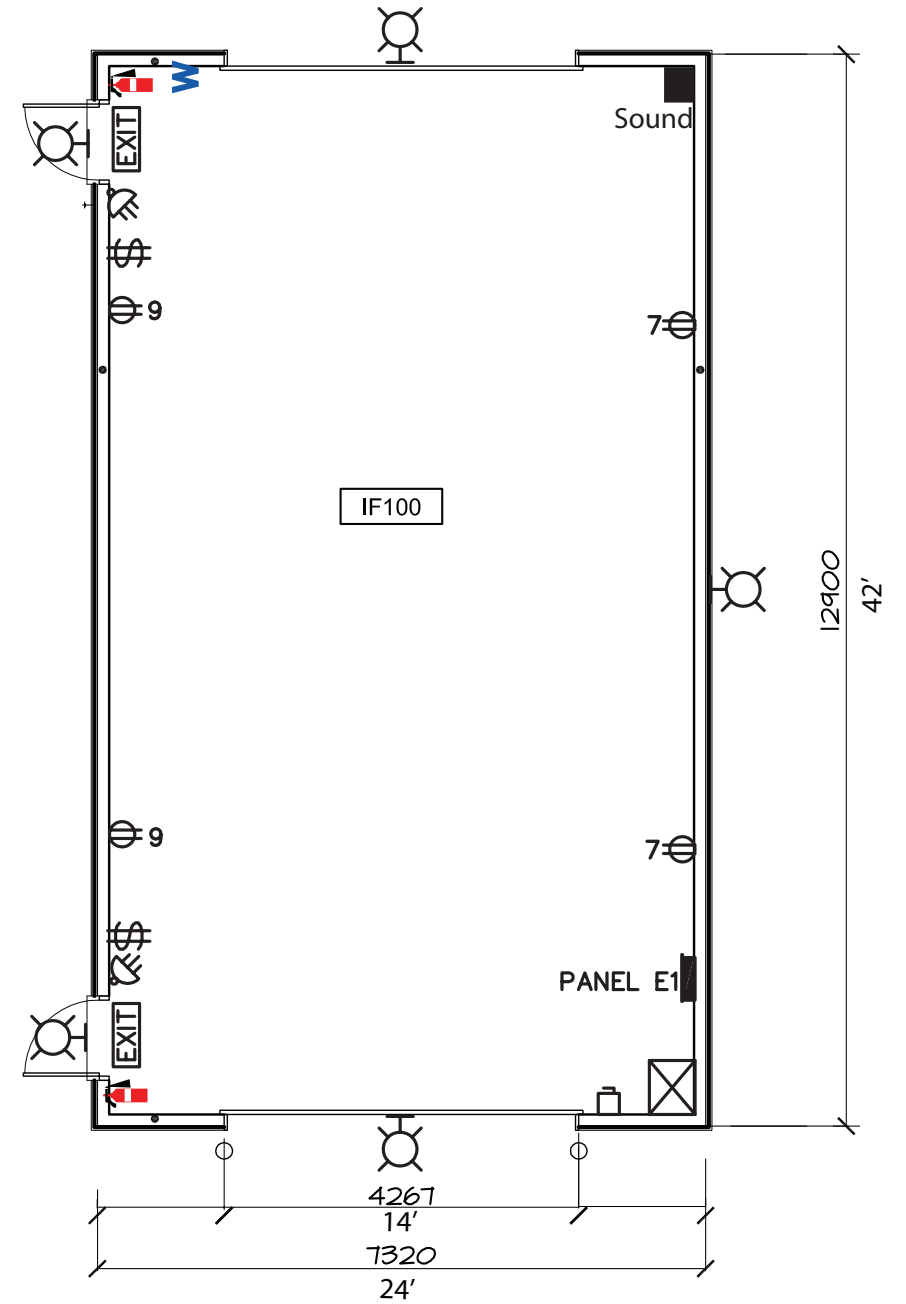
All outlets are in panel F1





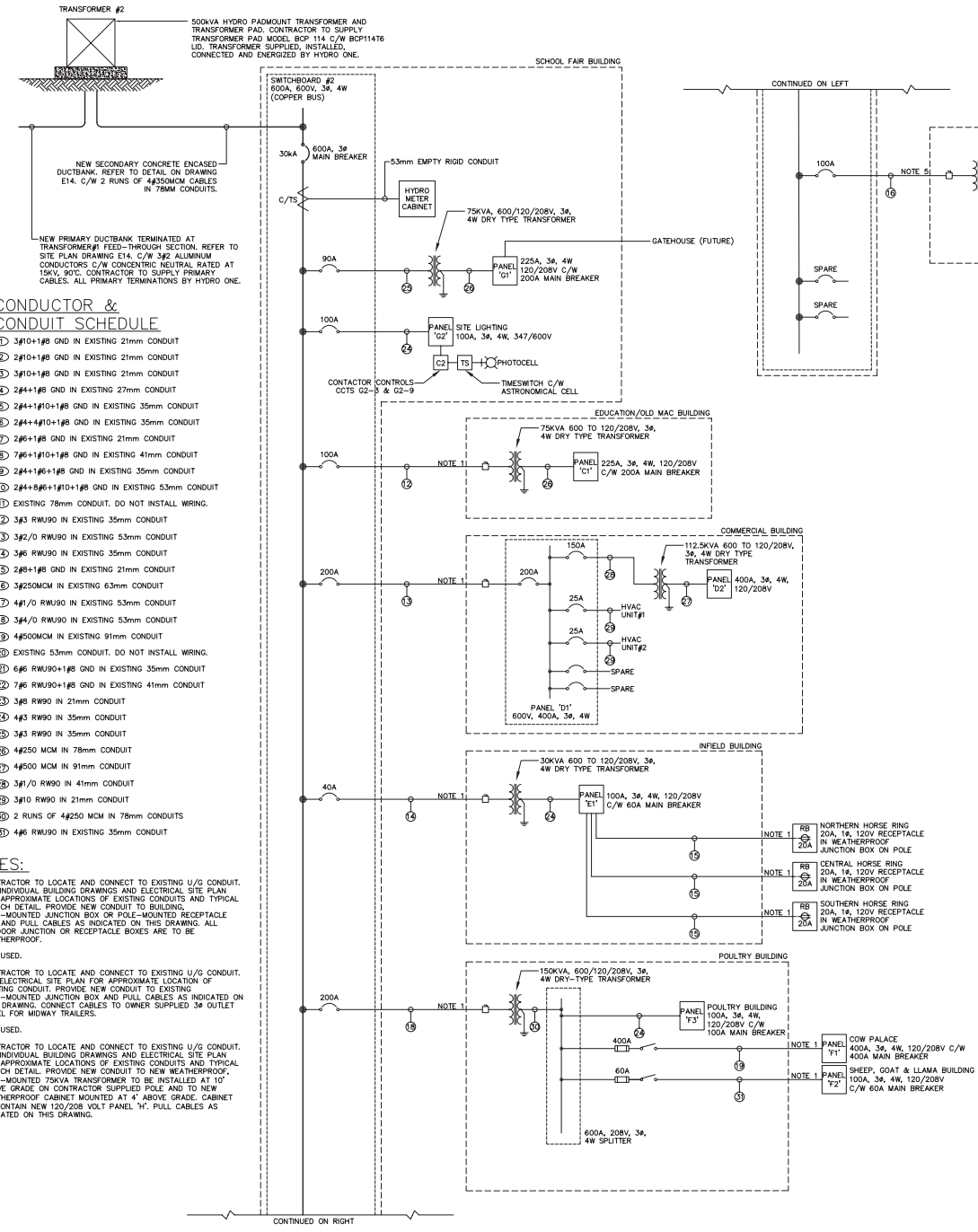
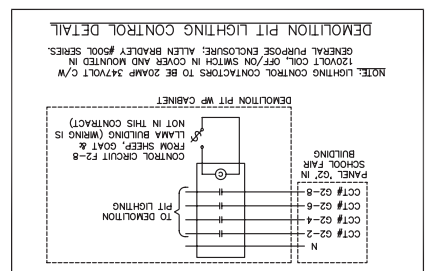
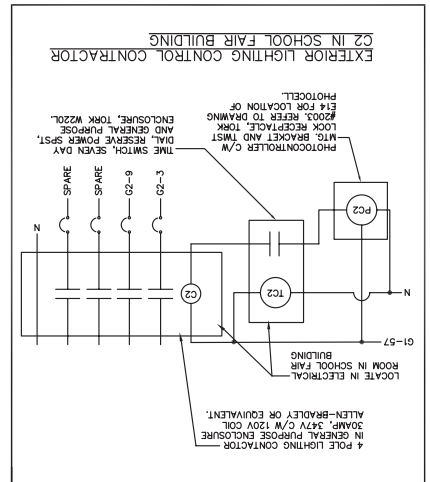
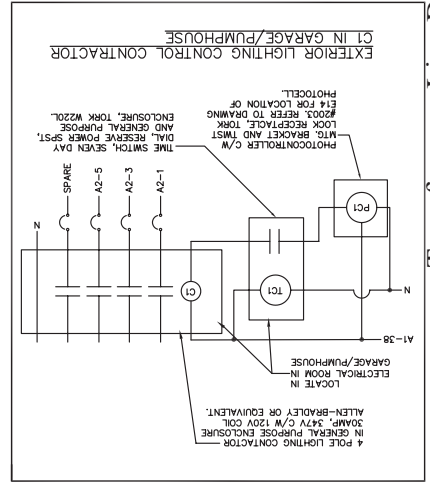
Gatehouse

Walked June 18th, 2010
All outlets are in panel A



Infield Building

Walked June 18th, 2010
All outlets are in panel E1



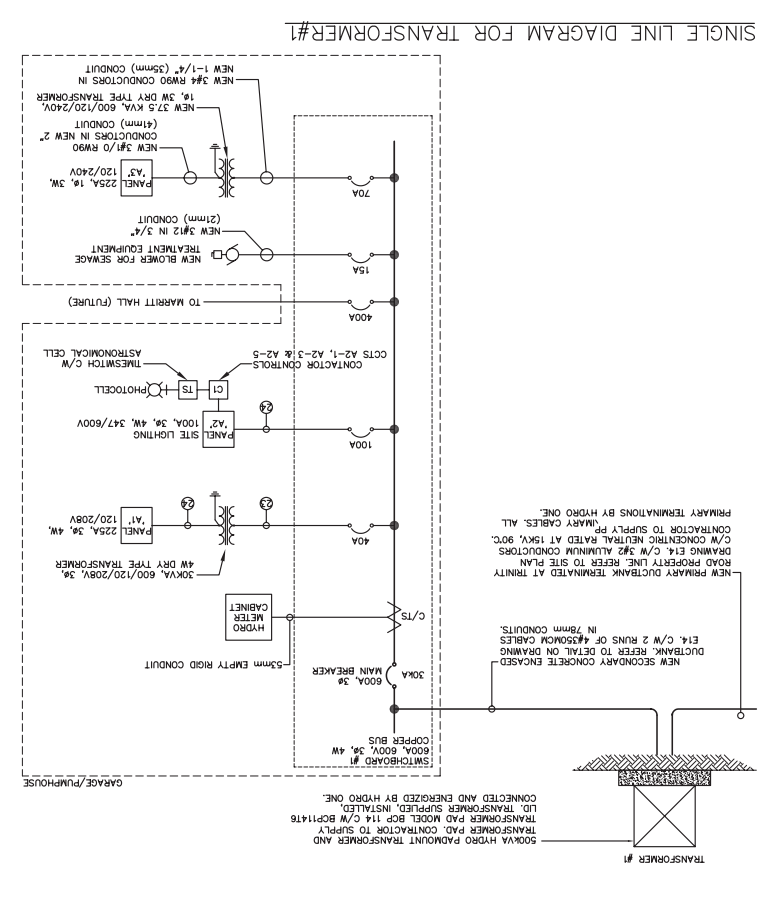
CONDUCTOR & CONDUIT SCHEDULE

- 1 3#10+1#8 GND IN EXISTING 21mm CONDUIT
- 2 2#10+1#8 GND IN EXISTING 21mm CONDUIT
- 3 3#10+1#8 GND IN EXISTING 21mm CONDUIT
- 4 2#4+1#8 GND IN EXISTING 27mm CONDUIT
- 5 2#4+1#10+1#8 GND IN EXISTING 35mm CONDUIT
- 6 2#4+1#10+1#8 GND IN EXISTING 35mm CONDUIT
- 7 2#6+1#8 GND IN EXISTING 21mm CONDUIT
- 8 7#6+1#10+1#8 GND IN EXISTING 41mm CONDUIT
- 9 2#4+1#8+1#8 GND IN EXISTING 35mm CONDUIT
- 10 2#4+8#8+1#10+1#8 GND IN EXISTING 53mm CONDUIT
- 11 EXISTING 78mm CONDUIT. DO NOT INSTALL WIRING.
- 12 3#3 RWU90 IN EXISTING 35mm CONDUIT
- 13 3#2/O RWU90 IN EXISTING 53mm CONDUIT
- 14 3#6 RWU90 IN EXISTING 35mm CONDUIT
- 15 2#8+1#8 GND IN EXISTING 21mm CONDUIT
- 16 3#225MCM IN EXISTING 63mm CONDUIT
- 17 4#1/O RWU90 IN EXISTING 53mm CONDUIT
- 18 3#4/O RWU90 IN EXISTING 53mm CONDUIT
- 19 4#500MCM IN EXISTING 91mm CONDUIT
- 20 EXISTING 53mm CONDUIT. DO NOT INSTALL WIRING.
- 21 6#6 RWU90+1#8 GND IN EXISTING 35mm CONDUIT
- 22 7#6 RWU90+1#8 GND IN EXISTING 41mm CONDUIT
- 23 3#8 RW90 IN 21mm CONDUIT
- 24 4#3 RW90 IN 35mm CONDUIT
- 25 3#3 RW90 IN 35mm CONDUIT
- 26 4#250 MCM IN 78mm CONDUIT
- 27 4#500 MCM IN 91mm CONDUIT
- 28 3#1/O RW90 IN 41mm CONDUIT
- 29 3#10 RW90 IN 21mm CONDUIT
- 30 2 RUNS OF 4#250 MCM IN 78mm CONDUITS
- 31 4#6 RW90 IN EXISTING 35mm CONDUIT

NOTES:

1. CONTRACTOR TO LOCATE AND CONNECT TO EXISTING U/G CONDUIT. SEE INDIVIDUAL BUILDING DRAWINGS AND ELECTRICAL SITE PLAN FOR APPROXIMATE LOCATIONS OF EXISTING CONDUITS AND TYPICAL TRENCH DETAIL. PROVIDE NEW CONDUIT TO BUILDING. POLE-MOUNTED JUNCTION BOX OR POLE-MOUNTED RECEPTACLE BOX AND PULL CABLES AS INDICATED ON THIS DRAWING. ALL OUTDOOR JUNCTION OR RECEPTACLE BOXES ARE TO BE WEATHERPROOF.
2. NOT USED.
3. CONTRACTOR TO LOCATE AND CONNECT TO EXISTING U/G CONDUIT. SEE ELECTRICAL SITE PLAN FOR APPROXIMATE LOCATION OF EXISTING CONDUIT. PROVIDE NEW CONDUIT TO EXISTING POLE-MOUNTED JUNCTION BOX AND PULL CABLES AS INDICATED ON THIS DRAWING. CONNECT CABLES TO OWNER SUPPLIED 30 OUTLET PANEL FOR MIDWAY TRAILERS.
4. NOT USED.
5. CONTRACTOR TO LOCATE AND CONNECT TO EXISTING U/G CONDUIT. SEE INDIVIDUAL BUILDING DRAWINGS AND ELECTRICAL SITE PLAN FOR APPROXIMATE LOCATIONS OF EXISTING CONDUITS AND TYPICAL TRENCH DETAIL. PROVIDE NEW CONDUIT TO NEW WEATHERPROOF, POLE-MOUNTED 75KVA TRANSFORMER TO BE INSTALLED AT 10' ABOVE GRADE ON CONTRACTOR SUPPLIED POLE AND TO NEW WEATHERPROOF CABINET MOUNTED AT 4' ABOVE GRADE. CABINET TO CONTAIN NEW 120/208 VOLT PANEL 'H'. PULL CABLES AS INDICATED ON THIS DRAWING.

SINGLE LINE DIAGRAM FOR TRANSFORMER #2



SINGLE LINE DIAGRAM FOR TRANSFORMER #1

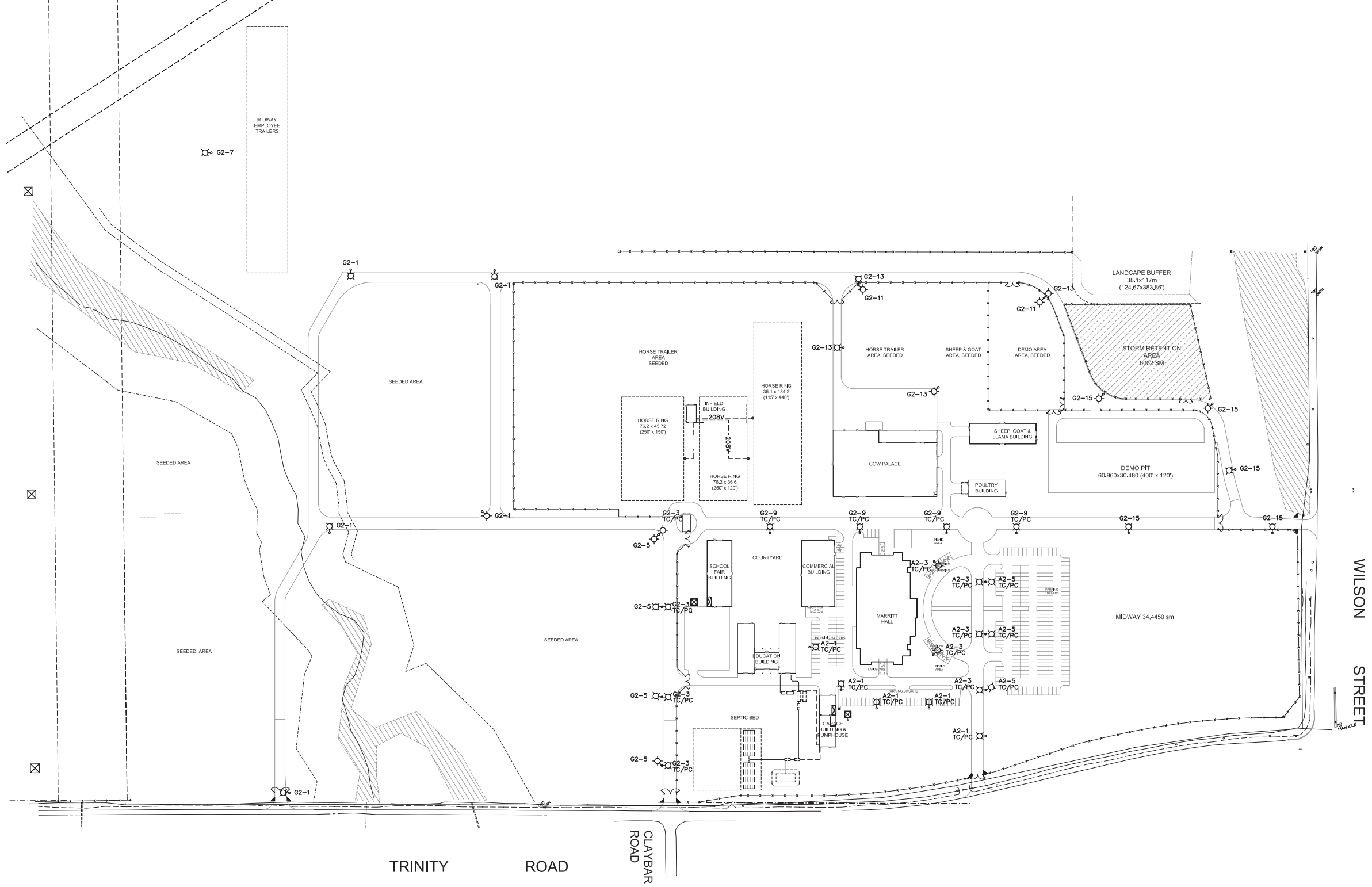
500VA HYDRO PADMOUNT TRANSFORMER AND TRANSFORMER PAD. CONTRACTOR TO SUPPLY TRANSFORMER PAD MODEL BCP 114 C/W BCP11476 LID. TRANSFORMER SUPPLIED, INSTALLED, CONNECTED AND ENERGIZED BY HYDRO ONE.

NEW SECONDARY CONCRETE ENCASED DUCTBANK. REFER TO DETAIL ON DRAWING E14. C/W 2 RUNS OF #450MCM CABLES IN 78mm CONDUITS.

CONTRACTOR TO LOCATE AND CONNECT TO EXISTING U/G CONDUIT. SEE INDIVIDUAL BUILDING DRAWINGS AND ELECTRICAL SITE PLAN FOR APPROXIMATE LOCATIONS OF EXISTING CONDUITS AND TYPICAL TRENCH DETAIL. PROVIDE NEW CONDUIT TO BUILDING. POLE-MOUNTED JUNCTION BOX OR POLE-MOUNTED RECEPTACLE BOX AND PULL CABLES AS INDICATED ON THIS DRAWING. ALL OUTDOOR JUNCTION OR RECEPTACLE BOXES ARE TO BE WEATHERPROOF.

CONTRACTOR TO LOCATE AND CONNECT TO EXISTING U/G CONDUIT. SEE ELECTRICAL SITE PLAN FOR APPROXIMATE LOCATION OF EXISTING CONDUIT. PROVIDE NEW CONDUIT TO EXISTING POLE-MOUNTED JUNCTION BOX AND PULL CABLES AS INDICATED ON THIS DRAWING. CONNECT CABLES TO OWNER SUPPLIED 30 OUTLET PANEL FOR MIDWAY TRAILERS.

CONTRACTOR TO LOCATE AND CONNECT TO EXISTING U/G CONDUIT. SEE INDIVIDUAL BUILDING DRAWINGS AND ELECTRICAL SITE PLAN FOR APPROXIMATE LOCATIONS OF EXISTING CONDUITS AND TYPICAL TRENCH DETAIL. PROVIDE NEW CONDUIT TO NEW WEATHERPROOF, POLE-MOUNTED 75KVA TRANSFORMER TO BE INSTALLED AT 10' ABOVE GRADE ON CONTRACTOR SUPPLIED POLE AND TO NEW WEATHERPROOF CABINET MOUNTED AT 4' ABOVE GRADE. CABINET TO CONTAIN NEW 120/208 VOLT PANEL 'H'. PULL CABLES AS INDICATED ON THIS DRAWING.



WILSON STREET

TRINITY ROAD

CLAYBAR ROAD